

ST. LUKE'S OUTLOOK

Ranch House Kids – VBS a Success!

Special points of interest:

- Ranch House Kids
- New Refugee Families
- Travelers
- Education Ministry
- Youth Ministry
- Helping Hands
- Blood Drive
- Pastors Letters
- Scholarship Recipients
- Joys and Concerns
- Round-Up

God's glory shone all around the Ranch at St. Luke's the week of July 18-22. Each morning the children gathered at the Circle G Ranch in our sanctuary. Pastor Mark led the opening songs. Then Dusty and Sunny the horse (aka William Sutton) introduced the topic of the day with a ranch twist. The children moved on to the craft corral, open range recreation, campfire sing-along music, chuck

wagon snacks and even storytelling in a tent!

Colors helped define the days with children, adults and youth volunteers digging through their drawers to find yellow outfits, purple shirts and red clothing. Each day the color was everywhere and inspiring. Children used Bible keys to remember God, Talk to God, Love each other, Give thanks and Believe in Jesus. Prizes were awarded daily as they

memorized their scripture verses. Even the snacks reflected the themes, and they learned new prayers, as well. The church was alive with 145 children 43 adults, 31 youth and 15 behind the scenes adult volunteers – every room was used and the grove kept the little ones busy.

Thanks to all those who stepped up to volunteer and make this year's VBS a HUGE success.





**ASP Returns
from another
successful
trip!**

ASP Returns!

The culmination of the 2005 ASP year was our trip to Bear Branch in Leslie County, Kentucky. We departed from St. Luke's on Saturday June 25 and returned on Saturday July 2. There was a nice crowd of family and church friends to see us off and to welcome us back. The St. Luke's ASP team consisted of a total of 58 people (35 youth and 23 adults). We were organized into ten work crews and our convoy consisted of 20 vans and trucks.

Saturday we traveled to Emory & Henry College in Emory, VA, where we spent the night in dorm rooms. On Sunday we had a nice worship service in the Emory & Henry chapel lead by our two ASP youth leaders -- Bailey and

Caitlin. We then traveled to the Leslie County ASP Center -- Big Creek Elementary School. We slept in the classrooms and ate great meals in the school cafeteria and had lots of peanut butter and jelly for lunch.

We were blessed with an ASP staff of 4 fine young college men and women who provided leadership all week long. We were also blessed with visits from Brooke Everhart and Brandon Robbins who are serving on ASP staff in two adjacent counties. It was great to see them! Be sure to keep them and all ASP staff in your prayers -- they have a huge job and a huge responsibility all summer long.

Our work crews met ten interesting homeown-

ers and their families and performed much good work to make the homes warmer, safer, and drier. Most of the work was typical home repair that included roofing, floor replacement, wall repair, room additions, and porch construction.

We will be getting pictures made and posting new picture boards in the hallways. The ASP team is very grateful to the people of St. Luke's who supported us with prayers, finances, vans, trucks, and radios. Also, we want to thank everyone who supported us through the annual ASP/Grafton Kiwanis Club barbecue. Many thanks to the Kiwanians for their hard work and to all of the St. Luke's folks who ate bunches of barbecue!

Meet
Our New
Refugee
Families!
(see page 8
for more
information)



Fazliyev and Supiyonov Families at Patrick Henry Airport, 7/7/2005

Front: L-R, Miyarsar & Ansha Fazliyeva. Back: Fatima Fazliyeva, Gulbatan Supiyanova, Flyura Supiyanova, Tasin Fazliyev, Asim Supiyonov, & Tasin Supiyonov

St. Luke's Travelers on the Go Again!

BLUE RIDGE
PARKWAY TO
BILTMORE /
ASHEVILLE-
OCTOBER
19 - 22, 2005



For those of you who have not signed up for the October trip on the Blue Ridge Parkway and the Biltmore Estates

tour, it isn't too late. Deadline for the \$100 per person reservation, plus the optional insurance, is due by **September 1, 2005**. Detailed information about the trip, reservation and insurance forms are on the St. Luke's Travelers bulletin board.

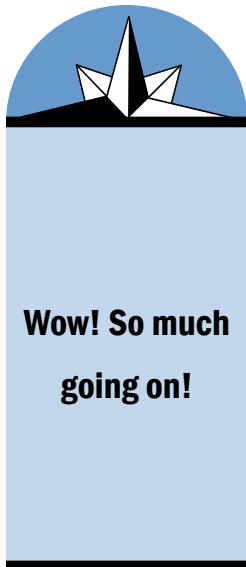
It has been our policy in the past that our trips are open to 'friends' of St. Luke's, based upon space available. At the present time the October 19 - 22 trip has some space. Any questions, contact Betty Brummer, 898-8031.

Exciting Opportunities in Education!

It is hard to believe that summer is almost over. There are only a few more weeks before the kids head back to school. This also means a new Sunday School year at St. Luke's is beginning. We are currently recruiting teachers for the 2005-2006 term. If you are interested in sharing your faith with the children and youth of this church, please contact Jennifer McMasters at 868-0150.

Faith Journeys: A Sunday School Teacher Training Event for Children, Youth and Adults

On Saturday, August 27, the VA Conference Board of Discipleship will offer a Sunday School Teacher training event at Williamsburg UMC. This event will feature a key note address and individual workshops in Sunday School for children, youth, and adults, including Bible basics for children, learning styles, teaching for special needs, how to start new classes, how to train and appreciate teachers, workshop rotation Sunday School, and drama/storytelling in the classroom. What an exciting opportunity to grow in our knowledge and faith! For more information or to register, contact Jennifer McMasters, 868-0150 or Rich Zeimet, 877-0753.



Wow! So much going on!

Youth Council Openings

Interested in serving on the Youth Council? then let LP (director@fellowshipofclay.org) know. Positions are available and you can help plan the fun, exciting activities that you and your friends would enjoy. Nominate who you'd like to lead you. Middle schoolers need a voice...last year's council members are now in high school. Nomination forms are on the youth bulletin board. Deadline is Aug 21. It's also good community service!

St. Luke's Reading Ministry

Volunteers are needed to participate in St. Luke's Reading Ministry at Grafton Bethel Elementary School for the 2005-2006 school year. Please prayerfully consider assisting children in their learning process. Applications are available in the church office. Questions? Contact Ronna McLane, 766-1619 or Laura McKinney, 867-1011.

What's happening in Sunday school beginning in September???

See what's being planned; check out the Youth Sunday School bulletin board outside the Director of Youth Ministries office.

Helping Hands Successful!



On July 14th and 15th, eleven rising 5th, & 6th graders attended our Third Annual Helping Hands Mission Trip. We traveled to Midlothian, VA where we stayed overnight at Woodlake UMC. Our St. Luke's group made up two teams with two chaperones each.

Our first team visited

Hermitage Retirement Center where we delighted the residents with singing and mingling.

On our second day mission, we joined Shady Grove UMC (Cindy Lee's new church) where we visited 2nd Baptist Church and helped in serving over 200 homeless individuals a hot meal.

Our second St. Luke's team worked on the New Hope House Project and helped revitalize a home.

The team completed painting a room and some of the kids left in a new shade of color! On the second day they delivered a contribution of aluminum can tabs to the Ronald McDonald House and were given a tour of the home.

Our children experienced God's love through acts of giving. They had a lot of fun, made new friends, learned new songs, and realized what a difference a caring person can make at any age.

Our chaperones were excited about sharing this experience with the children and were

reminded of the need that exists all around us.

If you get a chance ask Katie Ranger, Kaela Walsh, Leah Parr, Bobby Turnbull, Grace Berardini, Anne Davis, Paul Lapointe, Leah Haven, Keith Church, Josh McMillion, Kristen Kern, Joel Church, Tricia Church, Leah Omweg or Keith Bird what Helping Hands is all about. And don't forget to check out the bulletin board with photos of our awesome trip.

Red Cross Blood Drive

Tuesday, August 9th, 3:30—7:30 pm

Watch for sign-ups in the narthex.
The need is great so please help if you can.

Looking Ahead in Worship

August 7, 2005 – 11th Sunday after Pentecost

Genesis 37:1-4, 12-28; Psalm 105:1-6, 16-22, 45b; (OR 1 Kings 19:9-18; Psalm 85:8-13); Romans 10:5-15; Matthew 14:22-33

August 14, 2005 – 12th Sunday after Pentecost

Genesis 45:1-15; Psalm 133; (OR Isaiah 56:1, 6-8; Psalm 67)
Romans 11:1-2a, 29-32; Matthew 15:10-20) 21-28

August 21, 2005 – 13th Sunday after Pentecost

Exodus 1:8-2:10; Psalm 124; (OR Isaiah 51:1-6; Psalm 138)
Romans 12:1-8; Matthew 16:13-20

August 28, 2005 – 14th Sunday after Pentecost

Exodus 3:1-15; Psalm 105:1-6, 23-26, 45c; (OR Jeremiah 15:15-21; Psalm 26:1-8)
Romans 12:9-21; Matthew 16:21-28

Saint Luke's Confirmation Requirements

We enhanced our Confirmation curriculum to better prepare our middle school youth for the ministry of the baptized, a role they accept at the Confirmation service.

We offer the confirmation rite in the Spring of each year to eighth-grade youth or older who have completed the prerequisite course of study called Wilderness Wanderings (WW.)

The five WW courses (WW-1 through WW-4) are short length courses offered over the three years of middle school.

These courses help to form a foundation for your child's Christian identity and, therefore, we will award course credit to student's with 75% or greater attendance for each course.

Please be aware that due to the short nature of the courses your child may only be able to miss one class in order to meet the above requirement.

Use the table below to learn when your child should enroll in each WW course.

Course dates are displayed for the coming school year on bulletin board outside Youth Director's office and when you

'Register' via the 'Confirmation' link on www.stlukesyorktown.org

Confirmation classes are offered during the Sunday School hour, 9:45-11:00 a.m.

My Child started the sixth grade on or before Fall 2004	Using the following schedule, your child may be eligible for the Confirmation Rite in the Spring of 2006 Register
WW-1	Credit Already Awarded
Take WW-2 *	offered in Fall of 2005
Take WW-3b	offered in Fall of 2005
Take WW-3a *	offered in Winter of 2006
Take WW-4	offered in Winter of 2006
Winter means Jan-March; Fall means Sep-Dec	
* Take if you have not yet received credit for the course	
My Child starts the sixth grade in the Fall of 2005	Using the following schedule, your child may be eligible for the Confirmation Rite in the Spring of 2007 Register
Take WW-1	offered in see suggestion at "Register"
Take WW-2	offered in Fall of 2005
Take WW-3a	offered in Winter of 2006
Take WW-3b	offered in Fall of 2006
Take WW-4	offered in Winter of 2007
Winter means Jan-March; Fall means Sep-Dec	
My Child starts the sixth grade in the Fall of 2006	Using the following schedule, your child may be eligible for the Confirmation Rite in the Spring of 2008 Register
Take WW-1	offered in Winter of 2006
Take WW-2	offered in Fall of 2006
Take WW-3a	offered in Winter of 2007
Take WW-3b	offered in Fall of 2007
Take WW-4	offered in Winter of 2008
Winter means Jan-March; Fall means Sep-Dec	

Pastor Bill's Back Page

I'd like to use this space this month to share several things with you. As I've mentioned before, St. Luke's life and ministry keep a brisk pace even in the summertime. This is especially so in the dog days of August. This is, after all, the last month before the "Fall Schedule" begins.

First, I'm pleased to announce that on June 15th Bishop Kammerer appointed both Mark Richardson and me to St. Luke's for another year. I don't believe that either of these appointments has been stated heretofore in any of St. Luke's "official" publications or notices. Can you believe it? I am entering my sixth year among the St. Luke's community. Mark is entering his fourth year. Both Mark and I look forward to continuing our partnership in ministry with you. I hope it goes without saying, but we also seek your continued prayers as we serve Christ in you, with you, and among you at St. Luke's and the surrounding community.

Next, our Staff-Parish Relations Committee continues to interview candidates for the position of Director of Discipleship Ministries. The resumes have been numerous and the candidates interviewed have been impressive. Since the scope and volume of ministry in this position is considerable, the SPRC has been prayerful and diligent in seeking Cindy Lee's successor. I have no doubt that God is much involved in the process. I truly hope that the Lord soon will provide a wonderful addition to our

ministry team. Believe you me, you'll be among the very first to receive the news as it develops.

Speaking of our ministry team... If it's August, that means it's time for our Committee on Lay Leadership to roll up its collective sleeves! Very shortly, we'll begin to meet to discern which of you may possess the gifts and graces needed for particular ministry areas, boards, and committees within St. Luke's. There are always plenty of openings and lots of opportunities to be involved in our ministry together. When our committee members call, please prayerfully consider whether God is calling you to a place of leadership. Or, if God has already placed a ministry upon your heart, please let us know so that we can consider you in the ministry mix.

When I arrived at St. Luke's, I was told about the quick transition and turnover that can occur here. I have witnessed this reality in a big way in the past year. People who have been here for decades have relocated to other regions. Military families have been reassigned. Other folks have returned to the area and are again participating in our life and ministry together. I have to admit that I find it fascinating and a little intimidating, too.

In this time of transition within our larger community, I hope that you will help us to

be invitational and receptive. Intentionally take a moment to welcome new neighbors. Invite them to St. Luke's. Offer to bring them to worship, Sunday school, or any of our many other ministries and events. Sit with them and help to answer any questions they may have. In other words, just offer to be a friend to those who are new to the community or to St. Luke's. You'll be helping them, and you'll put a smile on God's face, too.

Speaking of help and smiles, I want to thank Keith Bird, our Appalachia Service Project coordinator, and the other adults and youth who trekked to Leslie County, Kentucky several weeks ago. ASP continues to be one of our most vital ministries in helping others and in shaping our own Christian identity. Congratulations on work faithfully and well done! Kudos, too, to Joel and Tricia Church, Keith Bird, Leah Omweg, and the boys and girls who participated in this year's Helping Hands Ministry. There were more participants than ever from St. Luke's who joined 150 other older elementary girls and boys for mission work in and around Richmond. And a great big YEEHAW to Debbie Frecker, Jennifer McMasters, Cathy Anderson, and all the talented teachers, assistants, youth helpers, parents and children who made Ranch (continued on page 7)



**God is doing
some
graceful things
with us and
among us...**

A Musing Mark

I know that it has been a month since we returned from the ASP trip. But because of newsletter deadlines this is the first chance I have to tie up a few loose ends from the trip.

First, some information for Jess about wasps, because you asked. Wasps play several important roles in nature. Some wasps eat plants and therefore work to control plant growth. Most wasps, being predators, help control the populations of countless other insects seeking to use them as food. For example, yellow jackets and paper wasps hunt caterpillars and other larvae that can destroy crops. And yes, some types of wasps do eat nectar and thus help pollinate flowers. Thus wasps play some important roles in nature. This is why, dear Jess, we do not wipe out all the wasps indiscriminately.

Second, yes Jen I gave

everyone the candy on the colorful cards. And to everybody, a word about the chocolate in your “warm fuzzy” bag. It seemed like a good idea at the time. I did not consider that people might not get them until after dinner. Therefore I did not expect them to sit in a hot window all day. I hope that your “chocolate candy melts” were good. It was still a good idea just the execution was a little lacking. Still I hope that you enjoyed it.

Third, to all who ask, I had a great trip. It was a great chance to relax a little bit. I had some great talks with many of you about a variety of things and I hope that we can continue some of those discussions.

Thank you to all of you who helped me through my own tough times with things. Here I wanted to be strong for you and you rallied around me when I needed it. Thank you, thank you, thank you.

Hey Laura, need your drink refilled? Ha, Ha, Ha!

And finally, wait... excuse me, -green. (Ask the youth, they might explain.)

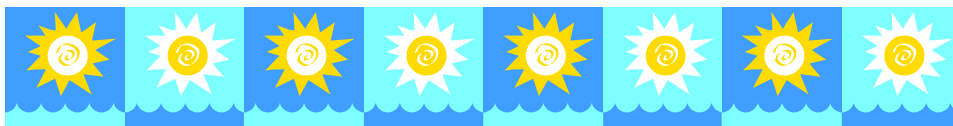
Anyway, to all who supported us in so many ways, thank you. If you would like to see some more information about the people we met you can go to the ASP webpage at www.asphome.org Look under the heading Summer Ministry and find year 2005. There you should see Jason’s Journeys. Week IV talks about the people there as well as showing some pictures of some of our teams in action.

I hope that you have a great summer. Remember, you don’t have to go far to find people who need help. Help those around you and see God’s love rebound back to you in so many ways.

- Pastor Mark



Remember, you don’t have to go far to find people who need help.



(continued from page 6) House Kids and life on the Circle G Ranch such a rousing success. It’s amazing to see (and hear!) the energy that is unleashed and the learning that occurs through music, storytelling, crafts, and recreation.

Finally, a couple of reminders about upcoming events. Our annual Round-Up Sunday is on

September 11th. Join us for morning worship and Sunday school followed by an always great time of food and fellowship in the Grove. Leaders of ministry areas and committees will be interested to know that our annual Charge Conference is scheduled for Thursday, October 27th at 7:00 P.M.

As always, thanks for who you are and for all you

do. God is doing some graceful things with us and among us as we seek to answer his call to “transform our community and world through God’s love.” God bless you, and

Shalom,
Pastor Bill

St. Luke's Sponsors Two New Refugee Families

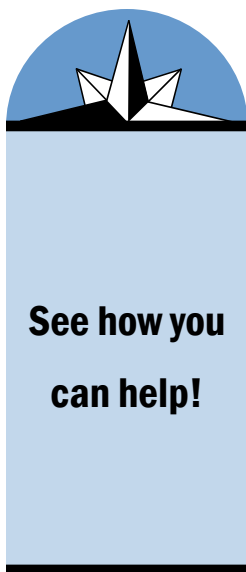
St. Luke's is helping sponsor two Russian Refugee families. They arrived 7 July, and are settling into a furnished house on Maney Drive in Newport News. Their immediate needs are transportation – they are two families of four - and interpretation – they don't yet speak English. Although they have food stamps, until they can learn English and find

employment, they will need donated consumable items such as:

1. Paper products – toilet paper, paper towels, and napkins
2. Toiletries – soap, lotion, deodorant, toothpaste & brushes, feminine products, etc.
3. Household supplies – laundry soap, dish soap, fabric softener, cleaning supplies, etc.

4. Summer clothing – men's medium, women's large & medium, girl's size 7.

If you would be willing to help with any of these items, providing transportation, teaching English (training provided), or just bringing them a meal, please contact Jacki and Pete Prindle, 874-0805.



A Medical Mission Project –“A Medicine Box”

What is a Medicine Box? It consists of 18 essential items needed by a hospital or clinic to treat the basic needs of its patients. It has two parts:

- * Products donated by a congregation or other groups, and
- * Products obtained by Interchurch Medical Assistance (IMA)

Churches contribute part of the essential items in the form of a

Kit of over-the-counter products and supplies. IMA will provide the other pharmaceuticals needed to complete the Medicine Box by using funds contributed by the churches.

One medicine box will enable a hospital or clinic to treat common illnesses in a population of approximately 1,000 adults and children for a three month period, or to respond to a special medical emergency, such

as a tsunami. The cost to each congregation for these items is \$375 for each kit.

We are asking St. Luke's for support in this project so that these items can be made available to those so greatly in need of medical care. Look for further information on this project in the bulletin and handouts.

Congrats!

2005 Recipients of the St. Luke's Easter Egg Project Scholarships

Jon Campbell Jr.	Raymond Lapointe	Amanda Petersen	Jacqueline Stabnow
Jacob Clotfelter	Bevin Leshner	Mary Beth Phaup	Jana Turner
Justin Crocker	Marie Claire Magowan	Donald Rice Jr.	Josie Turner
Nicole Crocker	W. Todd Magowan	Daniel Ripley	Ryan Wagner
Ryan Franz	Zachary McQuigg	Michael Ripley	
Michelle Gregory	Jenna Rowe	Mallory Rusk	

St. Luke's Celebrations and Concerns

In Memoriam

Were received for St. Luke's Relay for Life Teams for the American Cancer Society in memory of Nancy Masten by:

- David, Pam and Katelyn Cianelli
- E. T. and Nancy Deskins
- Jim and Donna Elliott
- Kent and Deb Fuller
- Joe and Edna Haggerty
- Chuck and Dot Harris
- Ray and Marlies Jancso
- Ray and Dorothy Jeffery and families
- Roger and Joan Reese
- Tom and Nancy Sayre
- Mildred Smith and family
- Rebecca Stevens
- Appalachia Service Project

Were received for the St. Luke's Choir Fund in memory of Herman Barnes by:

- Margie P. Brantley
- Patricia O. Weekly
- J.J. and Davetta Williams, Jr.

Congratulations to

Brian and Jessica Denny on the birth of a son, Cooper Monroe Denny, born June 29, 2005. Joel and Kathy Everhart are the proud grandparents.

Deployed

- Jeff Beattie
- Jonathan Bland
- Greg Kern
- Mike Sherman
- Shaun Slone
- Curtis Smith

Prayers & Sympathy

Tom Sayre and family on the death of his sister-in-law, Pam Lewis on June 14, 2005.

Faye Comanor and Amy Mills and families on the death of their father, a charter member of our church, Herman Barnes on June 27, 2005.

John Masten and Jim and Dave Masten on the death of his wife and their mother, Nancy Masten on June 28, 2005.

Vicki King and Lee and Ann Person and Kim Person on the death of Vicki's husband, Ann's father, and Kim's grandfather respectively, O. E. King on July 3, 2005.



**Please keep
these and others
in your prayers.**

Thank You

I would like to thank my church family for all the loving care shown to me while I was in the hospital. All the cards, flowers, visits and most of all the prayers meant so much to me. God Bless,
Ann Fink

The John Masten Family would like to thank all of the people of St. Luke's for keeping us in their prayers, sending us cards, and providing us food in our time of grief. Please keep us in your prayers as we try to get back to a "new" normal.

With Thanks,
John Masten
Jim & Stacie Masten
David Masten

The Staff-Parish Relations Committee would like to thank the congregation for its generous contributions to the Love Offering presented to Cindy Lee on June 12, 2005. In addition, the SPRC would like to thank all of the participants and leaders of the St. Luke's music night that was dedicated to Cindy. Each of these events was a great success due to the hard work and generosity of all involved.

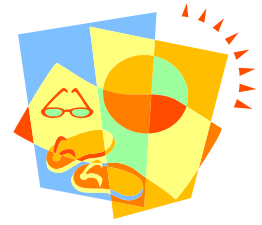
2	Ron & Donna Dorenbusch(A) Ed & Bette Seymore(A)	Kaylin Mitchell Vannah Mitchell	Rodney & Ellen Fields(A) Joan Reese
3	Kathy Drummond Nina Moss John & Kathie Nett(A) Carter Posey Karrie Sancho Scott & Kelly Dayton(A) Barbara Finocchio Tim Moon Jack Rine John Wirt	13 Betty Fernald Nancy Leonard Tessa McElvein Lee & Ann Person(A)	23 Mary Dula Ann Ellis Melissa Gibson Anne Samples
5	Carole Barrett Jeanette George J. T. Reese Bob & Dawne Rudolf(A)	14 Blair & Mary Ellis(A) 15 Sherri Austin Bill & Jo Boyd(A) Mark Early Nancy Leshner David Nett Melanie Nett Dave & Charlotte Owens(A)	24 Cindy Campbell James Mullins, III Gloria Respress Rick & Wanda Sills(A) 25 David & Theresa Johnston(A) 26 Marvin & Bea Burgess(A) David Rusk Fred Sawin
6	Renee' Ferrell Will Hymes Melissa Koch Paul Lapointe, II Fred & Sandy Penfield(A) Sun Cha Pettyjohn	Beth Stabnow Scot Tully Nicky Walters 16 Justin Crocker Jeff Dunlap Monty & Sharon Guin(A) Burke & Gay King(A) Ryon Williams	27 Lori Burnette Pat Ferriter Terry Futrell Henry & Cynthia Gleisberg(A) Karen Rice
7	Joyce Adams Sarah Clark Sean Dronen Rachel Drummond Will Finocchio Jason & Cathy Garrison(A) Joe Martin Linda O'Beirne	17 John & Pam Dunning (A) Jennifer Gates David Grooms S. G. Kessler Donald & Jacki Martin(A) Edward Stover Monica VanLear	28 Marilyn Barr Robin Decoux Dana & Julie Ferrell(A) Julie Furick Jason Garrison Paul & Julie Lapointe(A) 29 Courtney & Melanie Carpenter(A) Jim Elliott George McKinney Dave & Jacquie Petersen(A) Rick Sills Alex Vogt
8	Pamela Smith	18 Ann Burnette	30 Ricky & Peggy Bryant(A) Harry & Marcella Griffin(A) Kinsey Hall Bob Jernell Brent Maxwell Edward Myers David Tyree
9	Sue Hughes Louis & Peggy Marino(A)	Betty Brummer Johnny & Skeeter Coleman(A) Mark Fischer Ashton Knight	31 Nathan Mang Steven Ripley Jerry & Jeanne Turner(A)
10	Justin Decoux Lea McCarthy Fred Penfield Phyllis Roth Wayne Smith Tom Tucker Calvin & Barbara White(A)	19 Angie Heist 20 Danielle Craig Kelly Ferguson Jim & Charlotte Kelly(A) Chelsea Menser Allen & Cecelia Ruskey(A) Lindsay Taylor	
11	Nichole Knicely Jason & Kathy Harris(A) Nancy Rodrigo Evelyn Seay Paul & Elise Seay(A) Phil Tillman	21 Martha Brewer Jim & Nina Moss(A) Betty Ann Perry John Stevenson	
12	Fred Arooji S. G. & Janet Kessler(A)	22 Jo Boyd	



AUGUST BIRTHDAYS AND ANNIVERSARIES



August 2005



Sun	Mon	Tue	Wed	Thu	Fri	Sat
Every Sunday 8:30 Worship 9:45 Worship 9:45 Sunday Sch. 11:00 Worship 11:00 Prayer Min. 5:00 & 6:00	1	2	3	4	5	6
		11:00 Staff Mt.	9:30 UMW Board			7:30 God & Grits Breakfast for Men 5:30 Wedding
7	8	9	10	11	12	13
	7:00 Boy Scouts	11:00 Staff Mt. 3:30-7:30 Blood Drive 6:45 Finance Com. 7:00 Youth Devos				7:30 God & Grits Breakfast for Men
14	15	16	17	18	19	20
8:30 & 11:00 Acolyte Recognition Youth Car Wash at St. Luke's	10:30 York Convalescent Worship Service 7:00 Boy Scouts	11:00 Staff Mt. 7:00 Youth Devos 7:00 Trustees 7:00 L.I.F.T. II Circle	4:00 Lay Leader Council Meeting			
21	22	23	24	25	26	27
8:15 UM Men's Breakfast	10:00 Riverside Regional Convalescent Worship Service 7:00 Boy Scouts	11:00 Staff Mt. 7:00 Youth Devos	7:00 SPRC	7:30 Education		
28	29	30	31			
	7:00 Boy Scouts	11:00 Staff Mt. 7:00 Youth Devos				

Round-Up September 11th

Attention Y'All!
The Fall Round-Up
is Coming!!
It's the
annual church-wide
family fling
on the back Forty
(aka "The Grove")
Sunday September
12th, right after the
11 o'clock service.
Chicken n' drinks off
the chuck wagon to

go with your two
"gracious-
plenty"
crocks
full
of



grub!

They'll be games
for all ages!! Bring
a can of food for
the food closet to
git in ...
Remember folks,
don't forgit to

label
them
spoons
and
dishes
of grub!!

C'mon out...Bring
yer grub and let's
have a fun day with
all of the church
family!

St. Luke's web page - stlukesyorktown.org
Fellowship of Clay web page - fellowshipofclay.org

We're on the web
stlukesyorktown.org!

Sunday
Worship - 8:30, 9:45 & 11:00 AM
Sunday School - 9:45 AM
Youth Fellowship - 5:00 & 6:00 PM

SCHEDULE OF SERVICES

ST. LUKE'S UNITED METHODIST CHURCH
300 ELLA TAYLOR ROAD
YORKTOWN, VA 23692

NON-PROFIT
ORGANIZATION
U. S. POSTAGE
PERMIT 16
YORKTOWN, VA
23692